



Chess

Merit Badge Workbook

This workbook can help you but you still need to read the merit badge pamphlet (book). No one can add or subtract from the Boy Scout Requirements #33216. Each Scout must do each requirement. The work space by each requirement is for the scout to make notes for discussing the item with the counselor, not for the full and complete answers.

Inaugural Badge Requirements: August, 2011, Workbook updated: August, 2011.

Scout's Name: _____ Unit: _____

Counselor's Name: _____ Counselor's Ph #: _____

1. Discuss with your merit badge counselor the history of the game of chess. _____

Explain why it is considered a game of planning and strategy. _____

2. Discuss with your merit badge counselor the following:

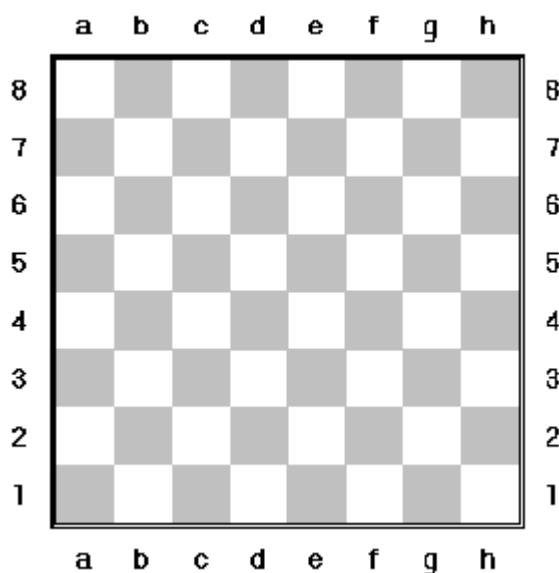
a. The benefits of playing chess, including developing critical thinking skills, concentration skills, and decision-making skills, and how these skills can help you in other areas of your life _____

b. Sportsmanship and chess etiquette _____

3. Demonstrate to your counselor that you know each of the following. Then, using Scouting's Teaching EDGE, teach the following to a Scout who does not know how to play chess: _____

a. The name of each chess piece _____

b. How to set up a chessboard _____



c. How each chess piece moves, including castling and en passant captures. _____

King: _____

Queen: _____

Bishop: _____

Knight: _____

Rook: _____

Pawn: _____

castling: _____

en passant captures _____

4. Do the following

a. Demonstrate scorekeeping using the algebraic system of chess notation.. _____

- b. Discuss the differences between the opening, the middle game, and the endgame. _____

- c. Explain four opening principles. _____

- d. Explain the four rules for castling. _____

- e. On a chessboard, demonstrate a "scholar's mate" and a "fool's mate." _____

- f. Demonstrate on a chessboard four ways a chess game can end in a draw. _____

5. Do the following.

- a. Explain four of the following elements of chess strategy: exploiting weaknesses, force, king safety, pawn structure, space, tempo, time. _____

- b. Explain any five of these chess tactics: clearance sacrifice, decoy, discovered attack, double attack, fork, interposing, overloading, overprotecting, pin, remove the defender, skewer, zwischenzug. _____

- c. Set up a chessboard with the white king on **e1**, the white rooks on **a1** and **h1**, and the black king on **e5**. With White to move first, demonstrate how to force checkmate on the black king. _____

- d. Set up and solve five direct-mate problems provided by your merit badge counselor. _____

6. Do ONE of the following: _____

- a. Play at least three games of chess with other Scouts and/or your merit badge counselor. Replay the games from your score sheets and discuss with your counselor how you might have played each game differently. _____

- b. Play in a scholastic (youth) chess tournament and use your score sheets from that tournament to replay your games with your merit badge counselor. Discuss with your counselor how you might have played each game differently. _____

- c. Organize and run a chess tournament with at least four players, plus you. Have each competitor play at least two games.. _____

Online Resources (Use any Internet resource with caution and only with your parent's or guardian's permission.)

Boy Scouts of America: ► scouting.org ► [Guide to Safe Scouting](#) ► [Age-Appropriate Guidelines](#)

Merit Badge Books: ► www.scoutstuff.org

Merit Badge Workbooks: *Please don't post workbooks on your site. Please instead post links to these:*

MeritBadge.org: <http://meritbadge.org/wiki/index.php/MBW> -or- usscouts.org: <http://www.usscouts.org/mb/worksheets/list.asp>